

Quick-fit

Quickfit

Georg-August-Universität Göttingen

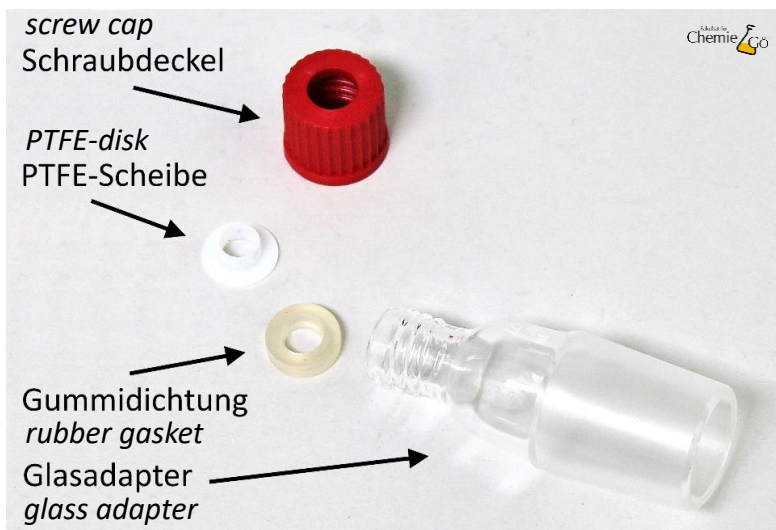


Quick-fit



A quick-fit is a ground joint with a screw adapter.

With the help of a quick-fit, thermometers and glass tubes can be connected to ground-glass equipment.



A quick-fit consists of:

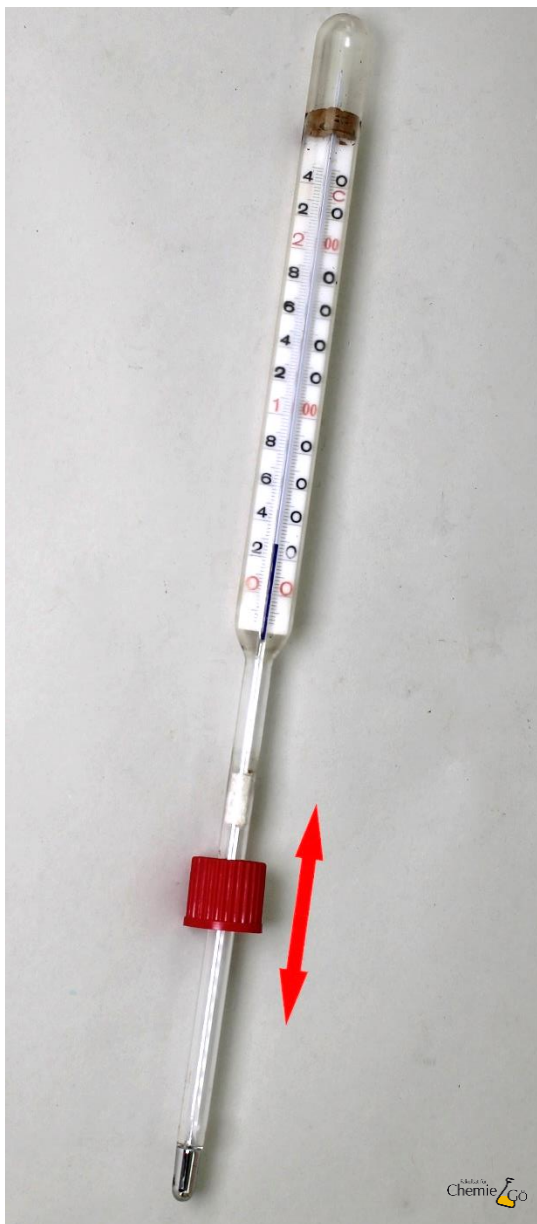
- a screw cap
- a rubber gasket
- a PTFE-disk
- a glass adapter



First, the PTFE disk is slid on, which is resistant to chemicals.

That way the following rubber gasket is protected.

The screw cap is attached last.



The screw cap with rubber gasket and PTFE-disk is slid on the thermometer.

The height of the thermometer can be adjusted.



The glass adapter is secured with a clip and the thermometer with screw cap is screwed on the quick-fit.

If needed, the height of the thermometer can be adjusted.